



Electrical Information	
Model No.	SL950
Power Consumption	150W-240W
Power Supply	Meanwell / Inventronics
Input Voltage	100-277 VAC, 50 / 60 Hz
Power Factor	> 0.95
Surge Protection	10KV/10KA 20KV,40KV customizable
Driver Type	Isolated ,Constant Current (CC)
Control	0-10V Dimmable / Photocell / DALI /DALI 2.0 /D4i CLO / LoRa / ZHAGA / Timer Control / Solar Optional

Optic Information	
LED Type Standard	LED 3030
Luminous Flux (±10%)	22500-36000lm
Efficacy (5000K Ra70)	150LM/W
Beam Angle	Type II-M , Type II-L , Type III-M, optional
LED Type Plus +	LED 5050
Luminous Flux (±10%)	25500-40800lm
Efficacy (5000K Ra70)	170LM/W
Beam Angle	Type II-M , Type II-L , Type III-M, optional
Correlated Color Temperature	4000K (3000-6500K optional)
Color Rendering Index	Ra70 (Ra80,Ra90 optional)
UGR level	NA

Description

- The "dolphin" series are designed with the industrial highest standard, due to its ruggedness and high quality, the dolphin prove to be reliable in the most demanding environments, like costal area of high salt concentration, high temperature desert areas. etc..
- The lower fin integrated heat dissipation design is Streamlined housing to avoid dust accumulation and rain-washing convenience and ensure better heat dissipation.

Key Features

- Possess the appearance and the utility model patent.
- Elegant "dolphin" streamline body design.
- Excellent thermal management.
- High-quality components.
- Robust, Compact, high-pressure die-cast housing .
- The housing is made of 100% aluminum alloy (ADC12).
- Powder coating with strong anti-corrosion.
- Bubble level, accurate the installation in one minute.
- Borosilicate glass lens, permanent non-aging, no yellowing,high temperature resistant, corrosion resistant, resistant to salt and alkali, easy to clean, and non-dusting.

Applications

- Road lighting
- Parking lots
- Residential areas
- Fast-speed roads
- Outdoor sports ground
- Square centers
- School
- Community lighting etc.

Dimensions and Mount

Product Dimension	950x342x128mm
Luminaire Net Weight	10.4±0.2kg
Export Carton Size(1 unit /ctn.)	102x41x18.5cm
Gross Weight(1 unit /ctn.)	12.0±0.3kg
Mounting Option	Side Entry Mounting
Material	ADC12 Alloy
Finish	Glass Optical Lens
Fixture Color	Powder Coating
EPA (side view)	RAL9006 White Aluminium
IK Rating	0.07m ² / 0.753ft ²
IP Rating	IK10
	IP67

Lifespan and Warranty

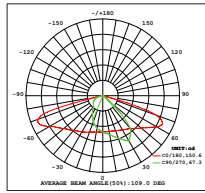
Operating Temperature	-30°C to + 50°C
Life Time of LED @Ta=25°C	54000hrs-L90
	114000hrs-L80
	182000hrs-L70
Warranty	5 Years (7-10 years optional)

Hot !

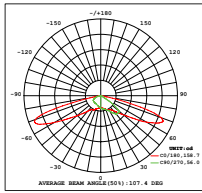


* Please consult us for details.

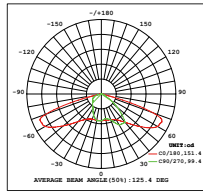
Photometry



Type II-M



Type II-L

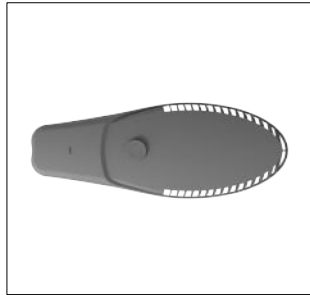


Type III-M

Multiple Views



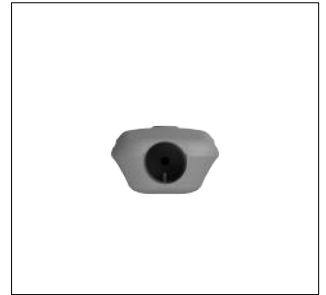
Front view



Rear view

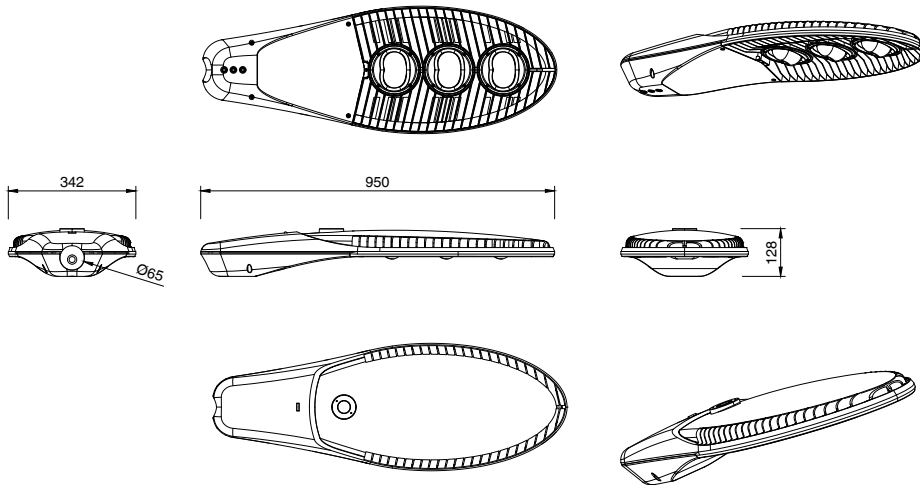


Side view



Upward view

Dimensions(unit:mm)



Accessories



Safety rope
Auxiliary safety device to prevent accidents.



Adjustable Arm
120° adjustable angle inside diameter 60-76mm.



ZHAGA Receptacles
Compliant with Zhaga Book 18.



NEMA socket
ANSI C136.41
3pin/ 5pin /7pin are optional.



Photocell control
ANSI C136.10
3pin/ 5pin /7pin are optional.



Shorting cap
Cover NEMA socket when it is not used.